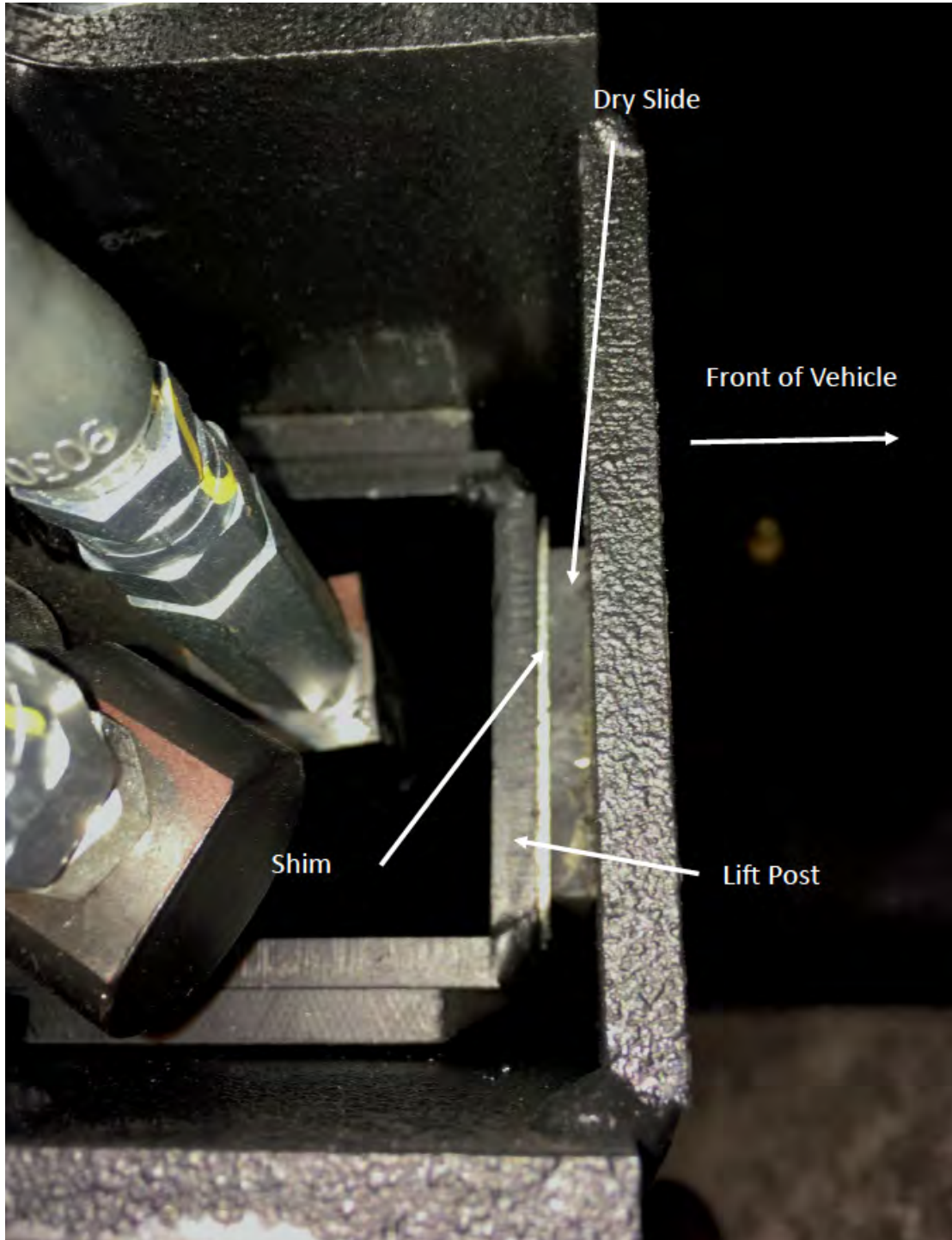


SHIMMING DRY SLIDE TO RAISE LIFT PAN TOE

POST - TOP VIEW



1. Lower lift to the ground.

Try to have neutral pressure on it to make the cylinder pin easier to get out.

Placing a jack under the frame may also help with taking pressure off the pin.

2. Remove the pin.

Jack up the vehicle with the pan resting on the ground. This will expose more of the inner beam. lift until the front plastic strip just clears the outer beam.

If you raise too much, the strips on the side will slide out and its hard to get the beam back together.



3. Remove the top screw of the plastic strip. Slide the shims between the plastic and the inner beam. Tighten screw.
4. Lower back down.
5. Insert pin back into cylinder. It should be pretty close, but lifting the truck slightly with the jack may help line it up.
6. Put keeper on pin.

